

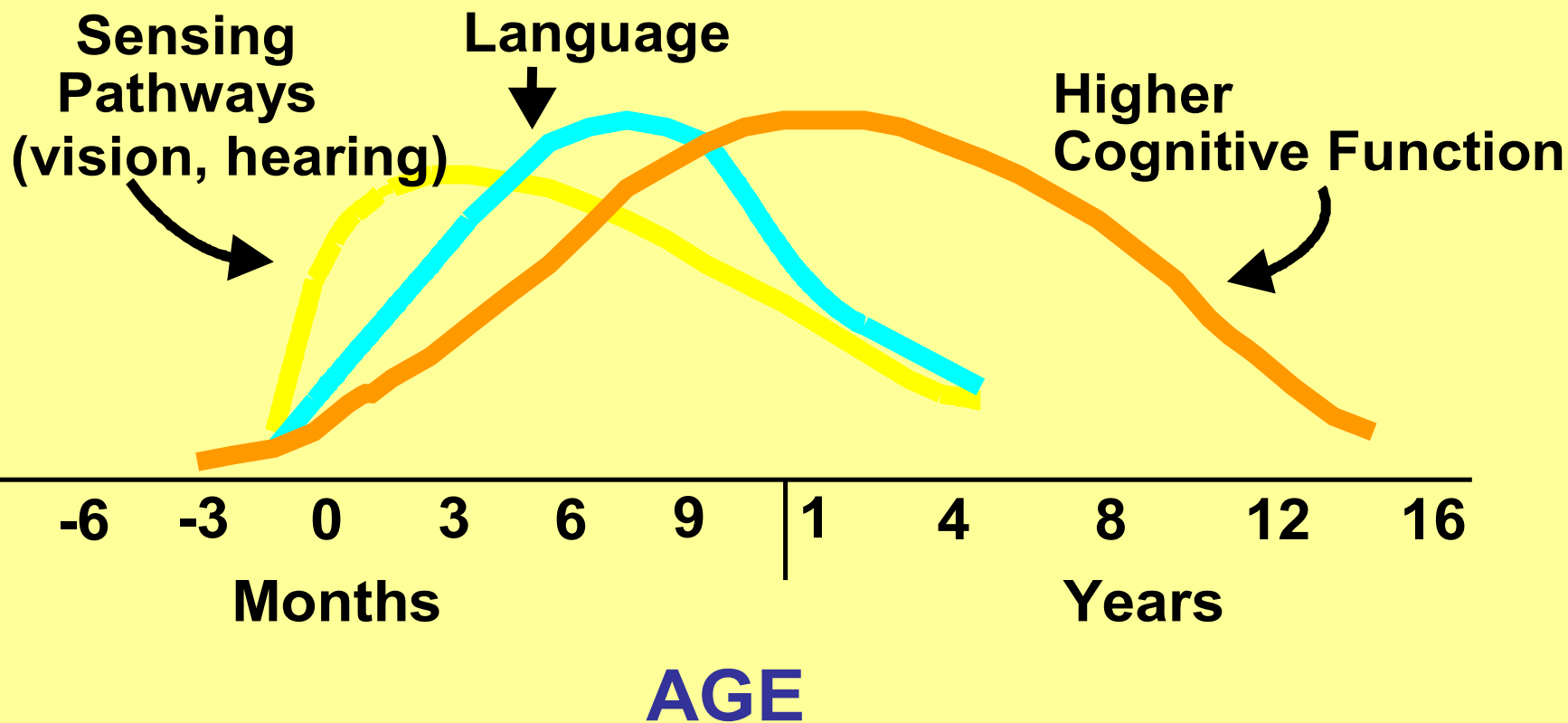
“The Child Care Transition”

Innocenti Report Card 8

Leonardo Menchini, UNICEF IRC

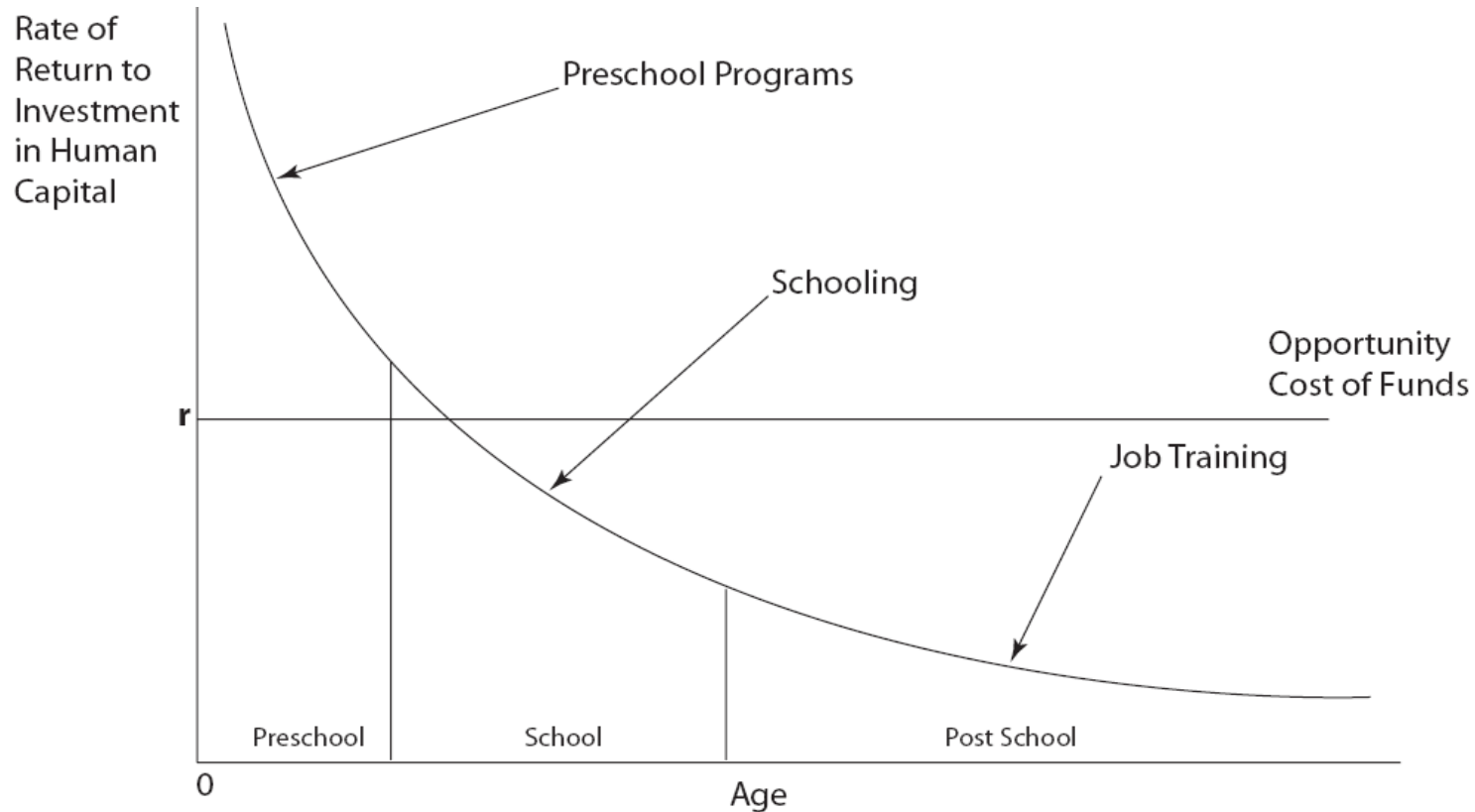
Florence, 28 January 2010

Human Brain Development – Synapse Formation



C. Nelson, in From Neurons to Neighborhoods, 2000.

Heckman Curve: Rates of Return to Human Capital Investment



Rates of Return to Human Capital Investment Initially Setting Investment to be Equal Across all Ages

Source: Carneiro & Heckman, 2003

Employment ratios of mothers, women aged 15-64, 2005

	By age of youngest child			
	0-16	<2	3-5	6-16
Austria	64.7	60.5	62.4	67.5
Belgium	59.9	63.8	63.3	56.9
Denmark	76.5	71.4	77.8	77.5
Finland	76.0	52.1	80.7	84.2
France	59.9	53.7	63.8	61.7
Germany	54.9	36.1	54.8	62.7
Greece	50.9	49.5	53.6	50.4
Ireland	57.5	55.0		59.9
Italy	48.1	47.3	50.6	47.5
Luxembourg	55.4	58.3	58.7	52.7
Netherlands	69.2	69.4	68.3	69.4
Portugal	67.8	69.1	71.8	65.4
Spain	52.0	52.6	54.2	50.9
Sweden	82.5	71.9	81.3	76.1
United Kingdom	61.7	52.6	58.3	67.7
Hungary	45.7	13.9	49.9	58.3
Poland	46.4

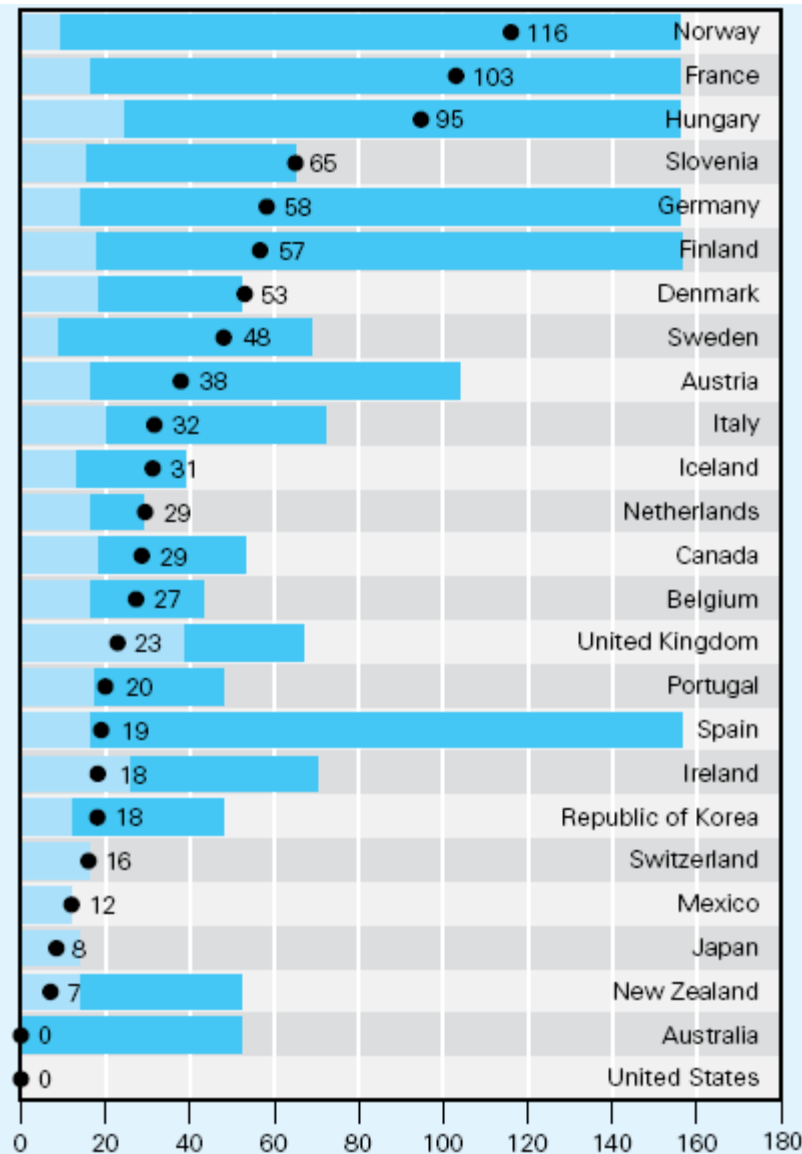
Source: OECD - Babies and Bosses 2007

Early Childhood Development and Care: Policies, access to services, quality, investments and general context. Benchmarks and results

Benchmark		1	2	3	4	5	6	7	8	9	10
	Number of benchmarks achieved	Parental leave of 1 year at 50% of salary	A national plan with priority for disadvantaged children	Subsidized and regulated child care services for 25% of children under 3	Subsidized and accredited early education services for 80% of 4 year-olds	80% of all child care staff trained	50% of staff in accredited early education services tertiary educated with relevant qualification	Minimum staff-to-children ratio of 1:15 in pre-school education	1.0% of GDP spent on early childhood services	Child poverty rate less than 10%	Near-universal outreach of essential child health services
Sweden	10	✓	✓	✓	✓	✓	✓	✓	✓	✓	✓
Iceland	9		✓	✓	✓	✓	✓	✓	✓	✓	✓
Denmark	8	✓	✓	✓	✓		✓	✓	✓	✓	
Finland	8	✓	✓	✓		✓		✓	✓	✓	✓
France	8	✓	✓	✓	✓	✓	✓		✓	✓	
Norway	8	✓	✓	✓	✓			✓	✓	✓	✓
Belgium (Flanders)	6		✓	✓	✓	✓	✓			✓	✓
Hungary	6		✓		✓	✓	✓	✓		✓	
New Zealand	6		✓	✓	✓	✓	✓	✓			
Slovenia	6	✓	✓	✓		✓	✓				✓
Austria	5		✓		✓	✓	✓	✓		✓	
Netherlands	5		✓	✓	✓	✓	✓	✓			
United Kingdom*	5		✓	✓	✓	✓	✓				
Germany	4		✓		✓		✓	✓			
Italy	4		✓		✓	✓	✓				
Japan	4		✓		✓	✓					✓
Portugal	4		✓		✓	✓	✓				
Republic of Korea	4		✓		✓	✓	✓				✓
Mexico	3		✓			✓	✓				
Spain	3				✓	✓	✓				
Switzerland	3					✓		✓		✓	
United States	3			✓			✓	✓			
Australia	2			✓			✓				
Canada	1						✓				
Ireland	1						✓				
Total benchmarks met	126	6	19	13	15	17	20	12	6	10	8

*Data for the United Kingdom refer to England only.

Benchmark 1 – Effective parental leave



■ Entitlement to paid maternity leave (weeks)
■ Length of other leave (weeks)
● Effective parental leave (duration of leave multiplied by per cent of salary paid)†

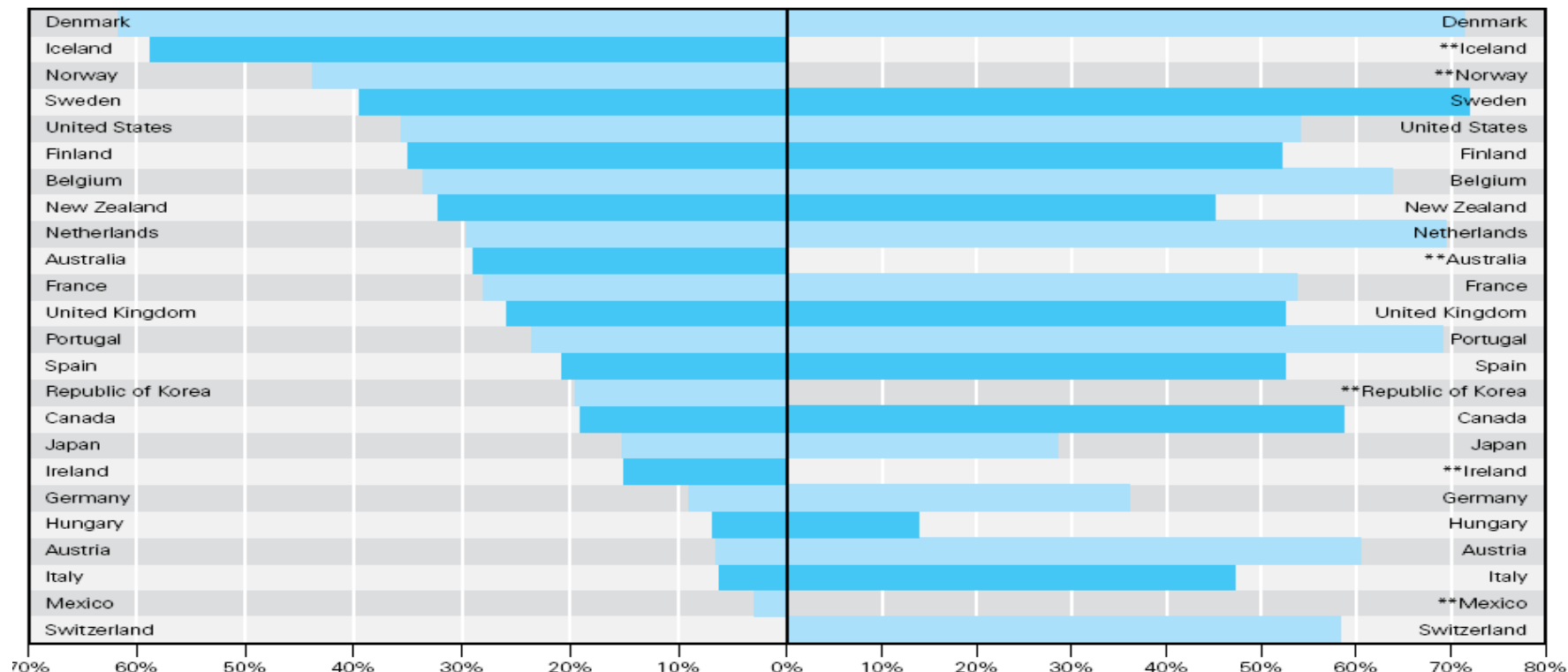
Source: Bennett (2008), updated from Moss & Wall (2007).

Proposed standard: at least a year (to include pre-natal leave) at 50% of the salary, and for unemployed parents not less than the minimum wage or the level of social assistance. At least 2 weeks should be specifically reserved to fathers.

The gap between the potential demand and supply of services for children under-3

Enrolment of children 0-3 years in licensed child care, 2004

Employment rates for women with youngest child under the age of 3, 2005



** No data available.

Source for enrolment of children 0-3 years in licensed child care: OECD Family database and OECD Education database.

Note: Data for Canada, and Germany, concern 2001; data for France reflect 2002; data for Iceland, Mexico, and Norway concern 2003; and data for Australia, Denmark, the Republic of Korea, and the United States concern 2005.

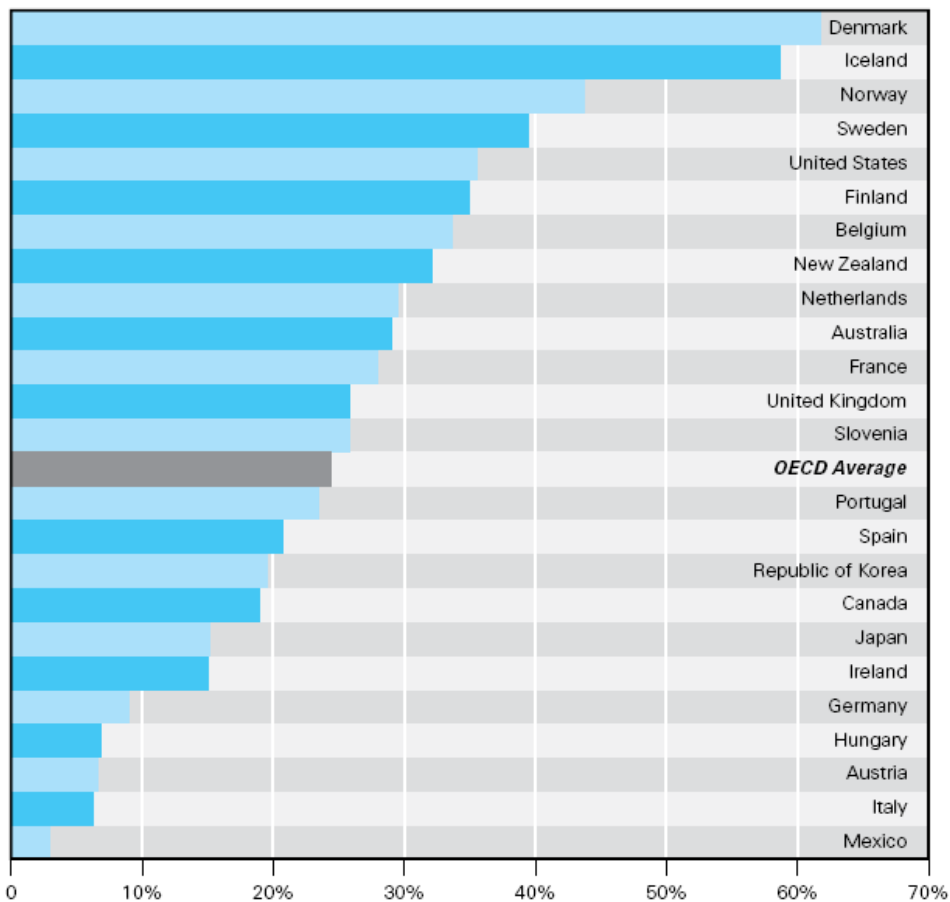
Source for employment rates for mothers with youngest child 0-3 years: OECD (2007) Babies and Bosses – Reconciling Work and Family Life (Vol. 5); Babies and Bosses (Australia, Australian Bureau of Statistics (2005); 6224.0.55.001 FA2 Labour Force Status and Other Characteristics of Families; Statistics Canada (2001 data), Statistics Denmark (1999 data), Statistics Finland (2002 data), Statistics Iceland (2002 data for women age 25-54), Japanese authorities (2001 data), Swiss LFS (2006 2nd quarter data), UK Office of National Statistics (2005 data), and the US current population survey (2005 data); all other EU-countries, European Labour Force Survey (2005 data), except for Italy which concern 2003).

Benchmark 2: A National Plan, with priority for children with disadvantaged socio-economic conditions

- “Countries should have undertaken extensive research and formulated a coherent national strategy to ensure that the benefits of early childhood education are fully available, especially to disadvantaged children”
- This dimension of early childhood services cannot currently be assessed and compared in a satisfactory way. Benchmark 2 uses as a proxy measure, whether governments have at least drawn up a national plan to the organization and financing for ECD services.
- According to the evaluation made for the Report Card, only 6 countries out of 25 don't meet the benchmark (Spain, USA, Switzerland, Australia, Canada and Ireland)

Benchmark 3: subsidized and regulated child care services for at least 25 per cent of children under the age of 3

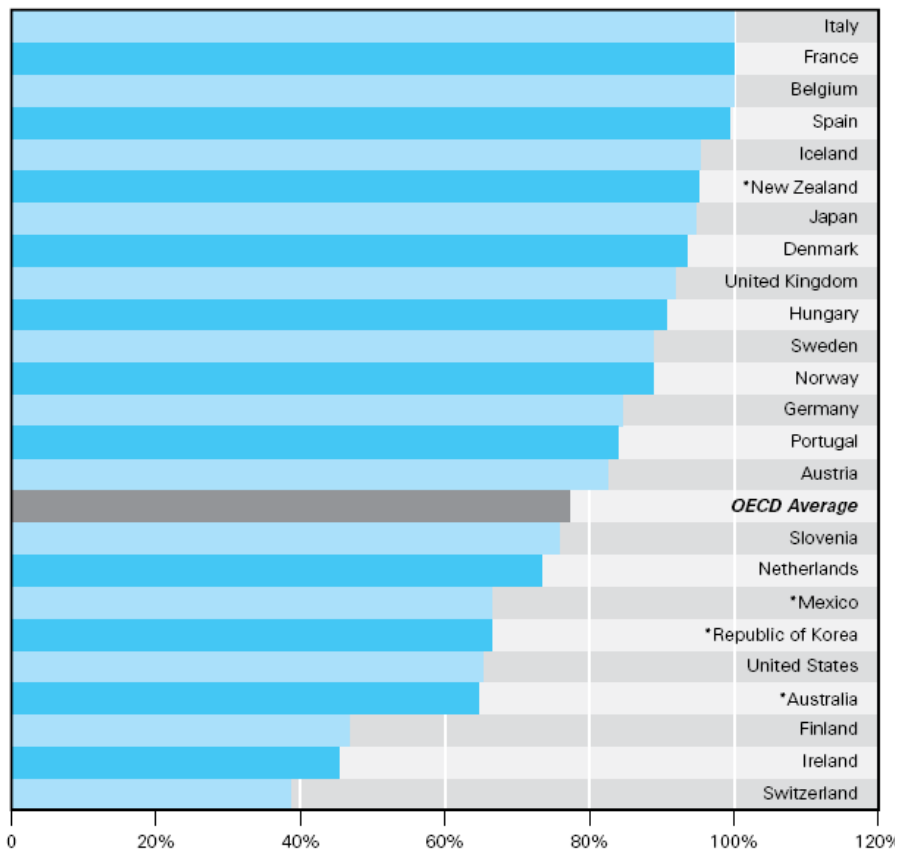
Fig. 2a Enrolment of 0-3 year-olds in child care



Source: OECD Family database and OECD Education database (2004).

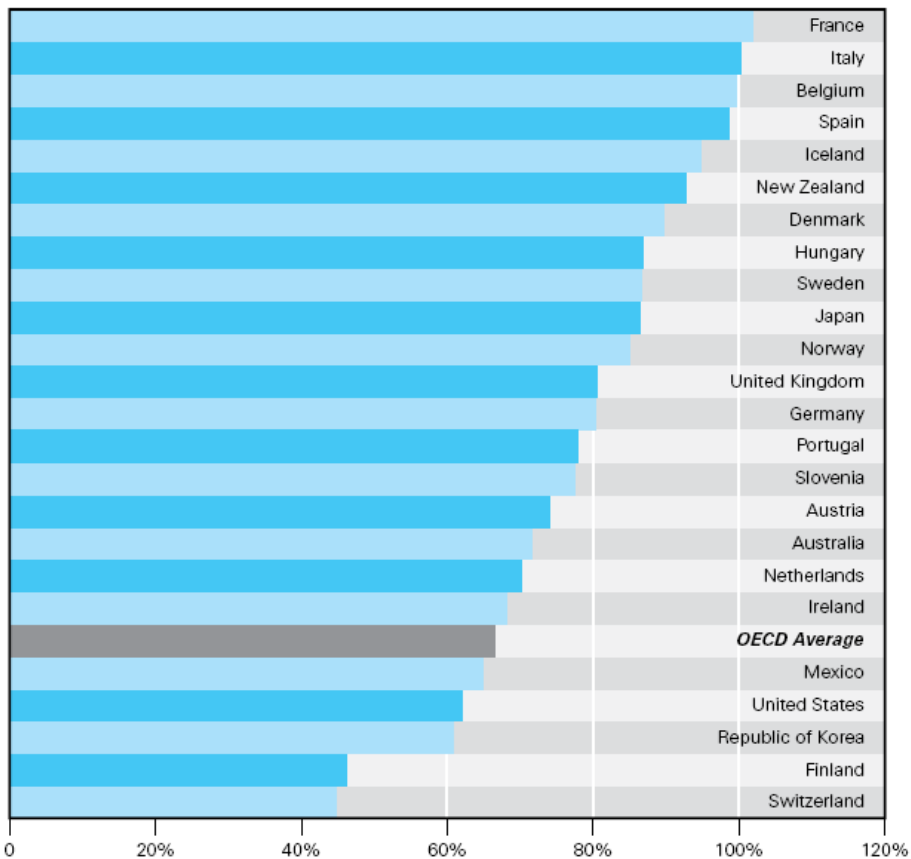
Benchmark 4: publicly subsidized and accredited early education services for at least 80 % of 4-year-old children (minimum of 15 hours per week)

Fig. 2b Enrolment of 4 year-olds in early education



Source: EUROSTAT (2005).
* Data from OECD Family database (2004).

Fig. 2c Enrolment of 3-6 year-olds in early education



Source: OECD Family database and OECD Education database (2004).

Input indicators: training for the staff, and children to staff ratio – Benchmarks 5-7

Benchmark 5 – A minimum level of training for staff working in services for children 0-3

- The minimum proposed is that at least 80% of staff having significant contact with young children should have relevant training. As minimum all staff should complete an induction course.
- A move towards pay and working conditions in line with the wider teaching or social care professions should be envisaged.
- 17 countries out of 25 meet this benchmark

Benchmark 6 – Higher level education and training for staff working in services for children 3-6

- The minimum proposed is that at least 50 per cent of staff in early education centers supported and accredited by governmental agencies should have a minimum of 3 years tertiary education with a recognized qualification in early childhood studies or a related field
- 20 countries out of 25 meet this benchmark (Austria, Finland, Japan, Norway and Switzerland do not meet it)

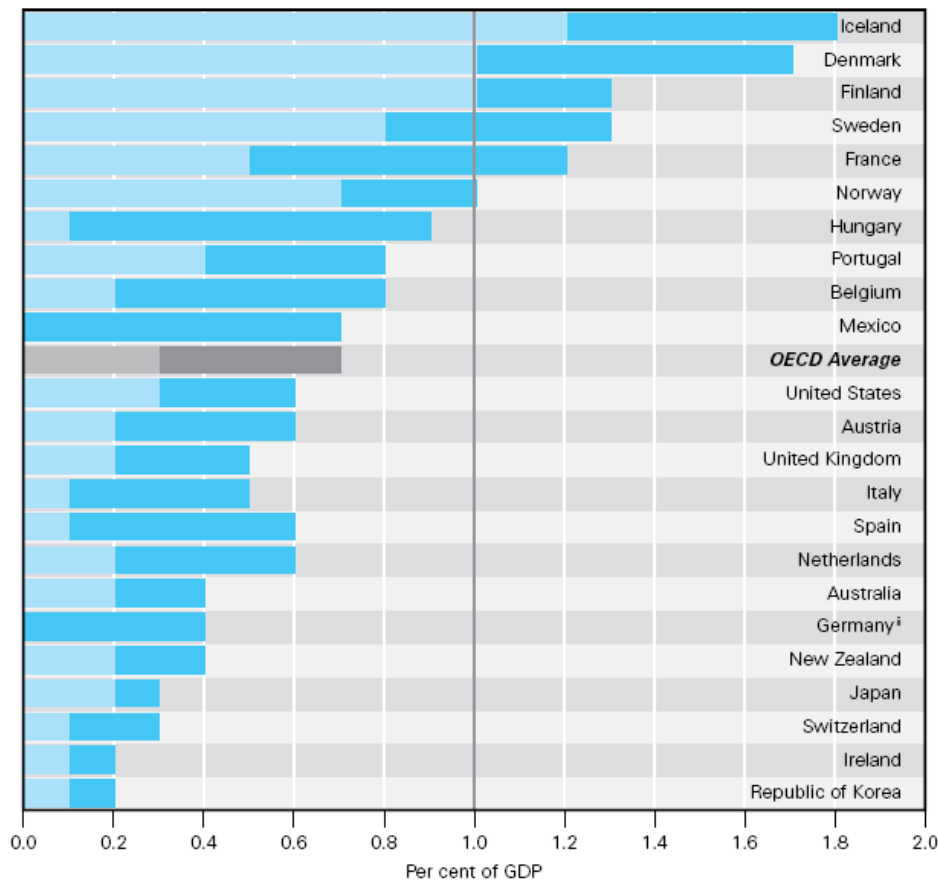
Benchmark 7: Staff to children ration

- The minimum proposed is that the ratio of pre-school children (4 to 5 year olds) to trained staff (aducators and assistants) should not be greater than 15 to 1, and that group size should not exceed 24.
- Only 12 OECD countries included in the comparison meet this target. OCSE si conformano a questo parametro.
- Only 5 countries meet all the benchmark on quality (5-7) (Iceland, Hungary, the Netherlands, New Zealand and Sweden), 6 countries meet only one benchmark (Australia, Belgium(Flanders), Canada, Ireland, Japan and Norway)

Benchmark 8: Public expenditure on early childhood education and care (for children aged 0-6)

Fig. 4

Public expenditure on child care and pre-school education services, per cent of GDPⁱ, 2003



Child care
Pre-school education

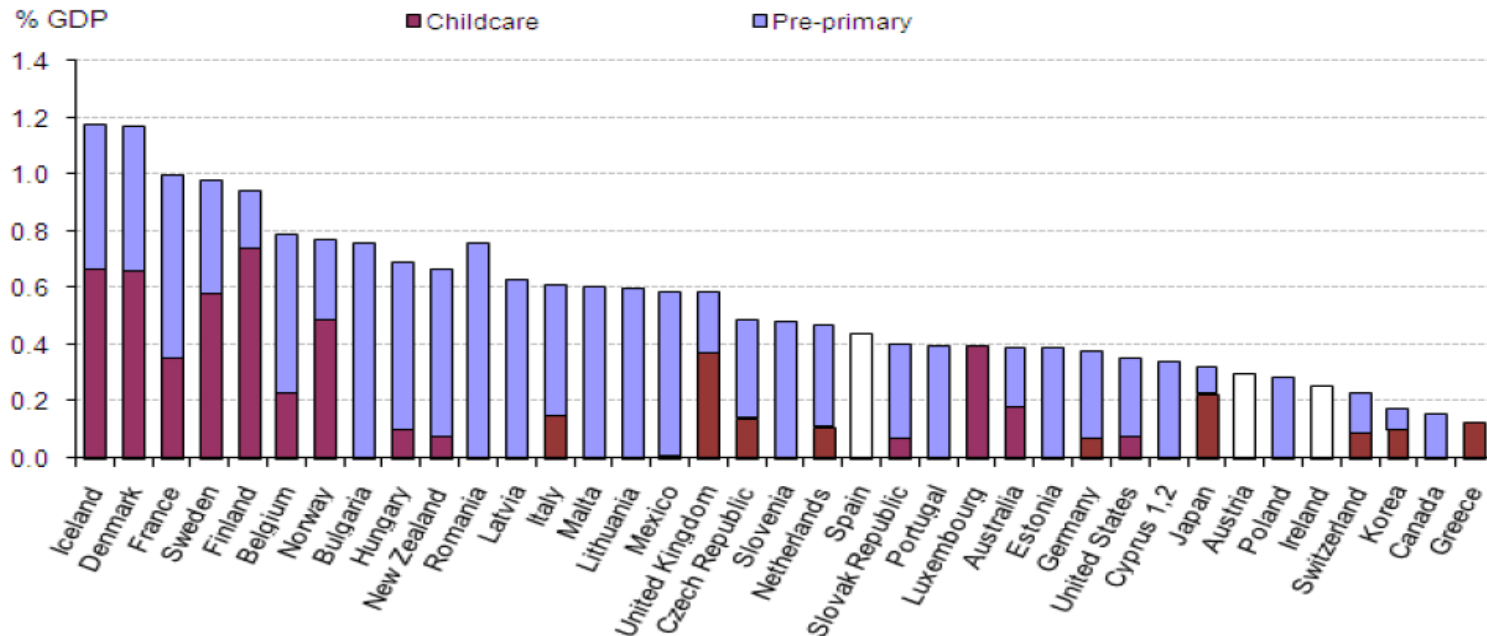
Source: OECD (2007), Social Expenditure database 1980-2003.

ⁱ Not including family benefits or the costs of parental leave entitlements.

ⁱⁱ Germany's low ranking reflects the fact that expenditures on children aged 0 to 3 years are listed at 0 per cent in the OECD Family database from which the data is taken. Federal funds to the Bundesländer are not earmarked for early childhood services; investment is therefore at the discretion of each Land. The new Bundesländer (former East Germany) attain among Europe's highest participation rates (37 per cent) for young children in child care services. In the old Bundesländer (former West Germany), there is significant public investment in child care services, reaching over €10,000 per child per year in some of the larger cities.

Benchmark 8: Public expenditure on early childhood education and care (for children aged 0-6)

Chart PF10.1 Public expenditure on childcare and early education services, per cent of GDP, 2005
Public spending on childcare including pre-primary education, 2005



Note: Figures for Austria, Ireland and Spain cannot be disaggregated by educational level.

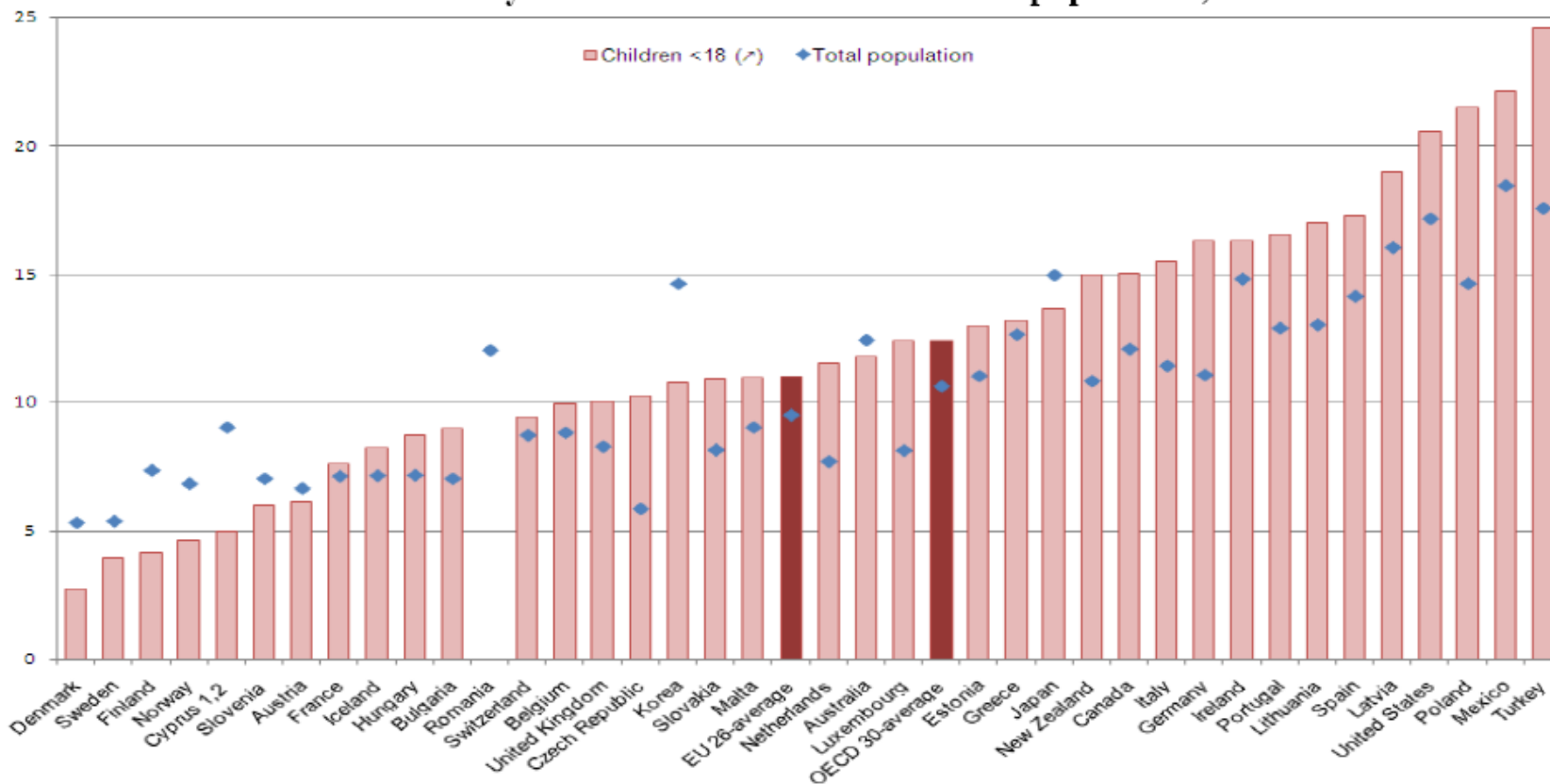
1) Footnote by Turkey: The information in this document with reference to « Cyprus » relates to the southern part of the Island. There is no single authority representing both Turkish and Greek Cypriot people on the Island. Turkey recognizes the Turkish Republic of Northern Cyprus (TRNC). Until a lasting and equitable solution is found within the context of United Nations, Turkey shall preserve its position concerning the "Cyprus issue".

2) Footnote by all the European Union Member States of the OECD and the European Commission: The Republic of Cyprus is recognized by all members of the United Nations with the exception of Turkey. The information in this document relates to the area under the effective control of the Government of the Republic of Cyprus.

Source: Social Expenditure database 1980-2005; OECD Education database; Eurostat for Non-OECD countries; US Department of Health and Human Services.

Benchmark 9: Child poverty under 10 per cent

Chart C08.1 Poverty rates for children and the total population, mid 2000s



Source: OECD (2008) and for EU non-OECD countries EU-SILC (2005).

Benchmark 10 – Outreach of essential services

Fig. 5a
Infant mortality rates (2005)

Country	Deaths per 1,000 live births
Iceland	2.3
Sweden	2.4
Japan	2.8
Finland	3.0
Slovenia ⁱⁱ	3.0
Norway	3.1
Portugal	3.5
France	3.6
Belgium (Flanders) ⁱⁱⁱ	3.9
Germany	3.9
Ireland	4.0
Spain	4.1
Austria	4.2
Switzerland	4.2
Denmark	4.4
Italy	4.7
Netherlands	4.9
Australia	5.0
New Zealand	5.1
United Kingdom	5.1
Canada ⁱ	5.3
Republic of Korea ⁱⁱ	6.0
Hungary	6.2
United States ⁱ	6.8
Mexico	18.8

Source: 2005, OECD Health Data 2007 – Version: October 2007.

Note:

ⁱ 2004, OECD Health Data 2007.

ⁱⁱ 2005, World Health Statistics 2007.

ⁱⁱⁱ 2005 Kind'en Gezin, Child in Flanders.

Fig. 5b
Low birthweight (2005)

Country	% of births below 2,500 grams
Iceland	3.9
Finland	4.1
Sweden ⁱⁱ	4.2
Republic of Korea	4.3
Norway ⁱⁱ	4.8
Denmark	4.9
Ireland ⁱⁱ	4.9
Canada ⁱⁱ	5.9
Slovenia ⁱ	6.0
New Zealand ⁱⁱ	6.1
Netherlands	6.2
Australia ⁱⁱ	6.4
Italy ⁱⁱ	6.7
Austria	6.8
Belgium (Flanders) ⁱⁱⁱ	6.8
France ⁱⁱ	6.8
Germany	6.8
Switzerland	7.0
Spain ⁱⁱ	7.1
Portugal	7.5
United Kingdom	7.5
United States	8.1
Hungary	8.2
Mexico	8.8
Japan	9.5

Source: 2005, OECD Health Data 2007 – Version: October 2007.

Note:

ⁱ Transmonee 2007 Features.

ⁱⁱ 2004, OECD Health Data 2007.

ⁱⁱⁱ 2005, Kind'en Gezin, Child in Flanders.

Fig. 5c
Immunization coverage 12-23 months (per cent, 2005)

Country	Measles	Polio 3	DPT 3	average
Hungary	99	99	99	99.0
Japan	99	97	99	98.3
Mexico	96	98	98	97.3
Netherlands	96	98	98	97.3
Sweden	94	99	99	97.3
Finland	97	97	97	97.0
Republic of Korea	99	96	96	97.0
Belgium (Flanders) ⁱ	94	98	98	96.7
Spain	97	96	96	96.3
Slovenia	94	96	96	95.3
France	87	98	98	94.3
Denmark	95	93	93	93.7
United States	93	92	96	93.7
Iceland	90	95	95	93.3
Italy	87	97	96	93.3
Portugal	93	93	93	93.0
Australia	94	92	92	92.7
Canada	94	89	94	92.3
Germany	93	94	90	92.3
Norway	90	91	91	90.7
Switzerland	82	95	93	90.0
Ireland	84	90	90	88.0
United Kingdom	82	91	91	88.0
New Zealand	82	89	89	86.7
Austria	75	86	86	82.3

Source: UNICEF/WHO estimates 2005.

Note:

ⁱ 2005, Kind'en Gezin, Child in Flanders.

Core critical issues

- At what age can out-of-home education and care begin to benefit the child?
- If today's knowledge suggests that children under 1 are best cared for by parents, what policies can best support today's parents in this task?
- What should be the underlying aims and priorities of early childhood services?
- How is quality in ECEC to be defined and monitored?
- What systems can make available high quality services to all and ensure that disadvantaged and at-risk children are included?
- Is the wider social and economic context supportive? Or are early childhood services being asked to row upstream against powerful currents of child poverty, and family-unfriendly policies in the economy and the workplace?